

LOCATED IN THE SW1/4 OF SECTION 9, T3S, R4W,  
SALT LAKE BASE & MERIDIAN  
TOOELE CITY, TOOELE COUNTY, UTAH

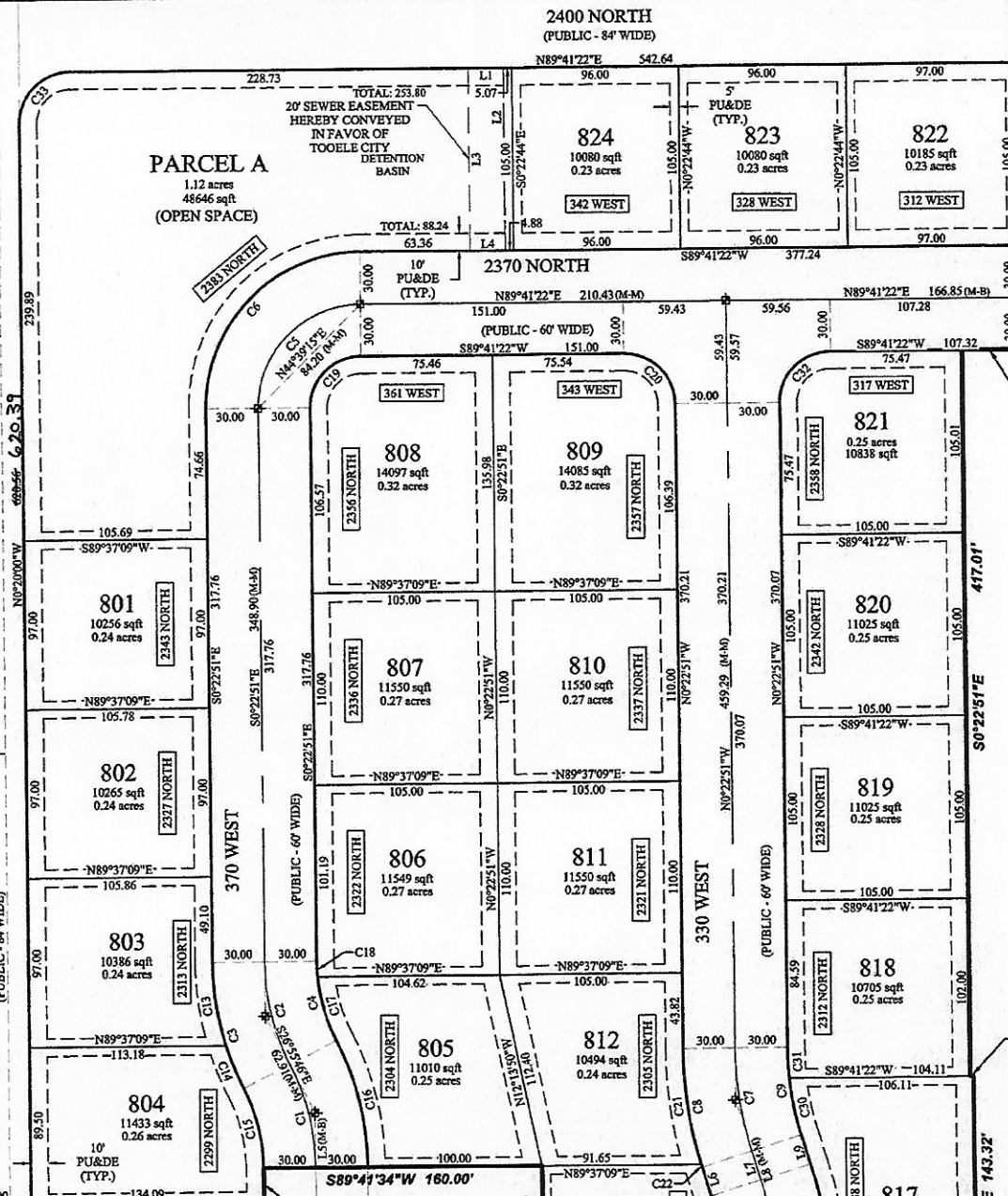
DON R. PARKER  
2-143-42

POINT OF BEGINNING

WEST 1/4 CORNER OF SECTION 9, T3S, R4W SLB&M  
2016 TOOELE COUNTY  
FLAT BRASS MONUMENT

20' WATER EASEMENT  
IN FAVOR OF  
TOOELE CITY  
ENTRY No. 269279

PARCEL A  
1.12 acres  
48646 sqft  
(OPEN SPACE)



30' EASEMENT &  
RIGHT-OF-WAY  
IN FAVOR OF J. BRUCE &  
JANICE T. CLEGG &  
KERRY HOLT FARMS, LTD  
ENTRY No. 150883

20' SEWER EASEMENT  
IN FAVOR OF  
TOOELE COUNTY  
SCHOOL DISTRICT  
ENTRY No. 235145

S0°18'38"E  
42.00'

S0°22'44"E 165.00'

S89°41'22"W 31.85'

S0°22'51"E 417.01'

N89°41'22"E 2.00'

SUNSET ESTATES  
FUTURE PHASES  
TOM NIXON FAMILY  
PARTNERSHIP  
ENTRY No. 291929

N75°02'02"E  
12.07'

S0°22'51"E 143.32'

S0°22'51"E 165.00'

S75°02'02"W 21.27'

S77°00'42"W 40.78'

SOUTHWEST CORNER OF SECTION 9, T3S, R4W SLB&M  
2000 TOOELE COUNTY  
FLAT BRASS MONUMENT

400 WEST  
(PUBLIC - 84' WIDE)

370 WEST  
(PUBLIC - 60' WIDE)

330 WEST  
(PUBLIC - 60' WIDE)

2280 NORTH  
(60' PUBLIC R.O.W.)

2000 NORTH  
(PUBLIC - 60' WIDE)

370 WEST  
(60' PUBLIC R.O.W.)

SOUTHWEST CORNER OF SECTION 9, T3S, R4W SLB&M  
2000 TOOELE COUNTY  
FLAT BRASS MONUMENT